

SE Course Exit Survey SEM-II Academic Year 2021-22 Subject :Data Structures and Algorithms

35 responses

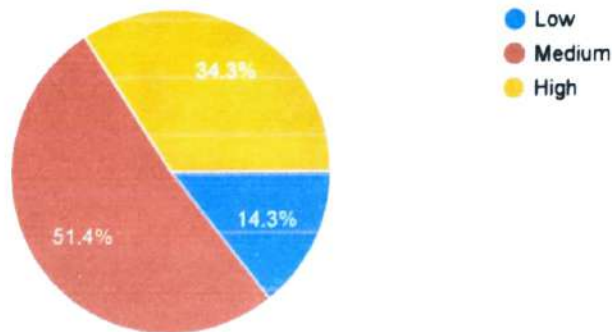
[Publish analytics](#)

How would you rate the lectures delivery level?

CO1: Identify and articulate the complexity goals and benefits of a good hashing scheme for real- world applications.

[Copy](#)

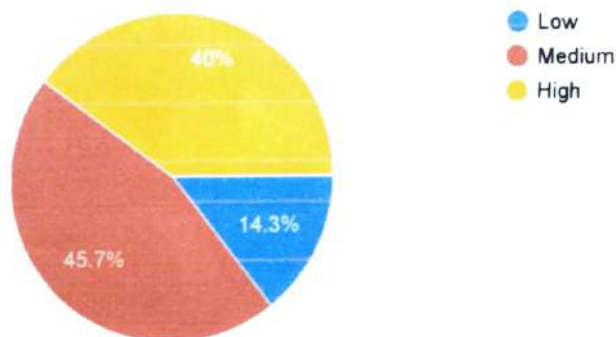
35 responses



CO2: Apply non-linear data structures for solving problems of various domain.

[Copy](#)

35 responses

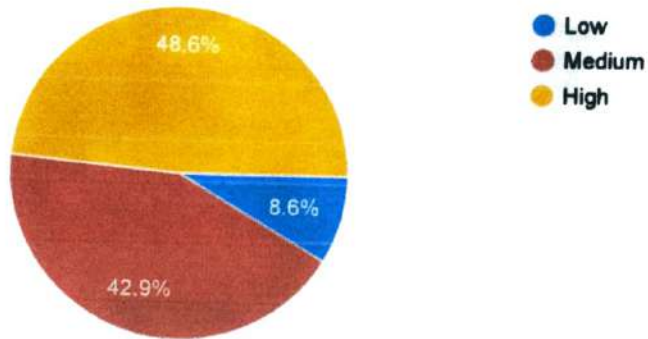


[Handwritten signature]

C03: Design and specify the operations of a nonlinear-based abstract data type and implement them in a high-level programming language.

 Copy

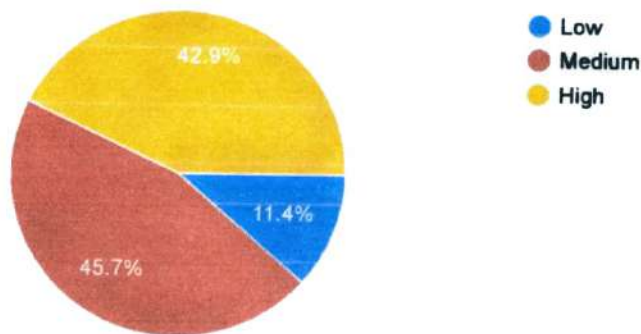
35 responses



C04: Analyze the algorithmic solutions for resource requirements and optimization

 Copy

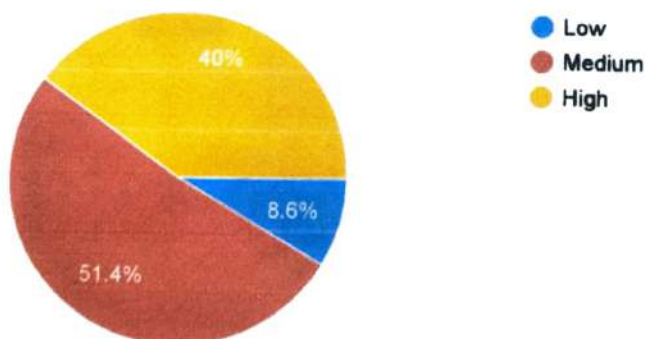
35 responses



C05: Use efficient indexing methods and multiway search techniques to store and maintain data.

 Copy

35 responses

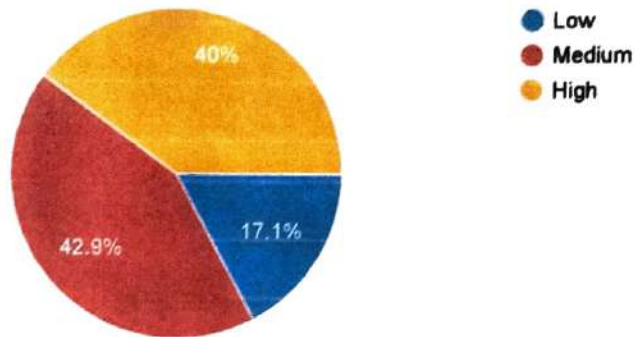


A handwritten signature in blue ink, appearing to be "S. Pawar", written over a horizontal line.

C06: Use appropriate modern tools to understand and analyze the functionalities confined to the secondary storage.

 Copy

35 responses



Special Comments or suggestions if any

6 responses

No

-

Excellent

-

N.A.


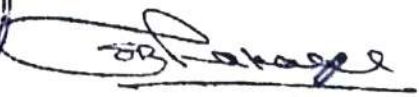
This content is neither created nor endorsed by Google. [Report Abuse](#) - [Terms of Service](#) - [Privacy Policy](#)

Google Forms


Subject Incharge


Head, AI&DS, Department


Principal

SE Course Exit Survey SEM-II Academic Year 2021-22 : Management Information Systems

32 responses

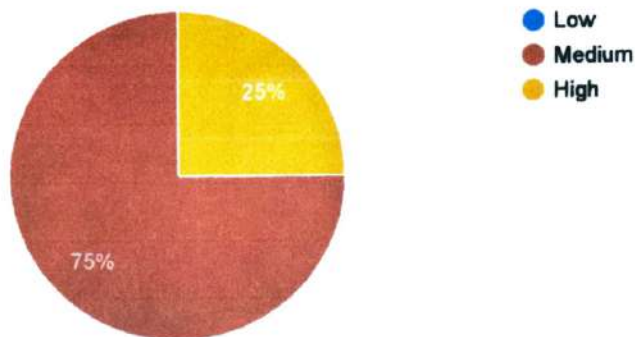
[Publish analytics](#)

How would you rate the lectures delivery level?

CO1 : Explain the concepts of Management Information System and Business intelligence for MIS.

 Copy

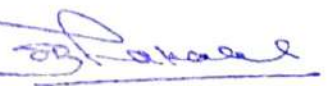
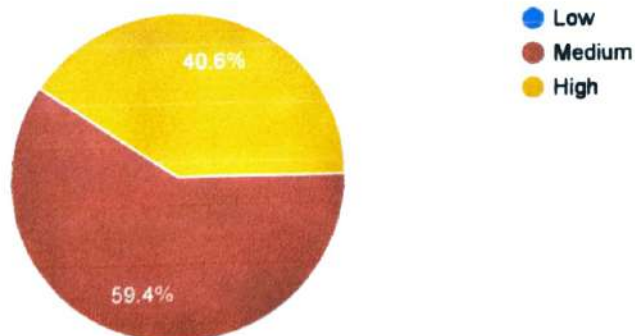
32 responses



CO2 : Illustrate the need of information systems in global business and ethical issues.

 Copy

32 responses

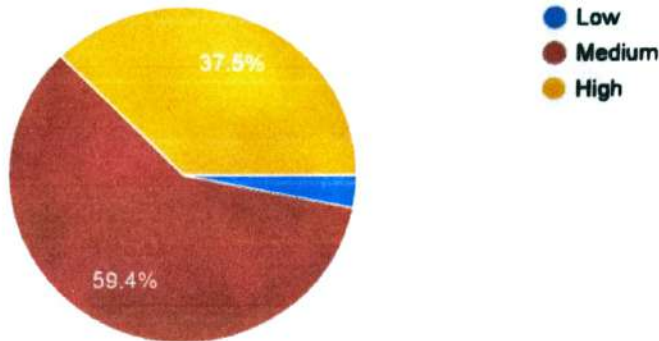


A handwritten signature in blue ink, appearing to read 'S. Pawar', written over a horizontal line.

CO3 : List the IT infrastructure components and explain security in the Information System. .

 Copy

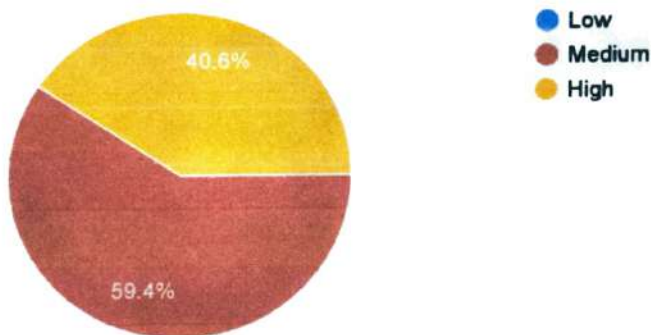
32 responses



CO4 : Demonstrate the importance of project management and extend its use in the international information system.

 Copy

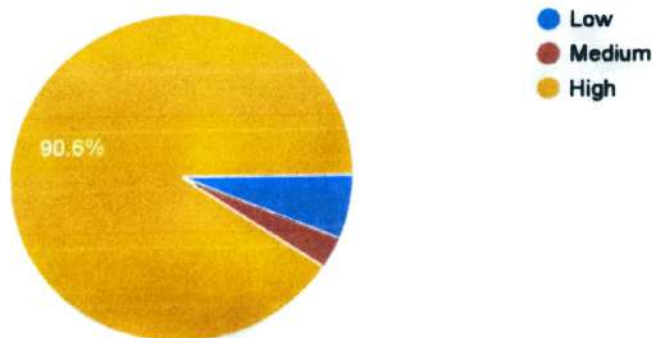
32 responses



CO5 : Illustrate the concepts of decision support systems for business applications.

 Copy

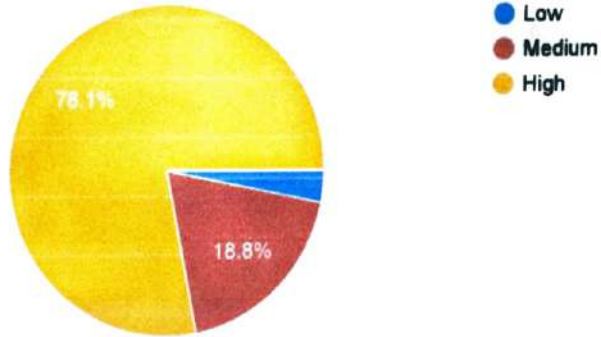
32 responses



CO6 : Relate artificial intelligence and data science for Management Information System

 Copy

32 responses



Special Comments or suggestions if any

9 responses

High

-

N.A.

This content is neither created nor endorsed by Google. [Report Abuse](#) - [Terms of Service](#) - [Privacy Policy](#)

Google Forms


Subject Incharge


Head, AI&DS, Department


Principal



SE Course Exit Survey SEM-II Academic Year 2021-22 Subject : Statistics

35 responses

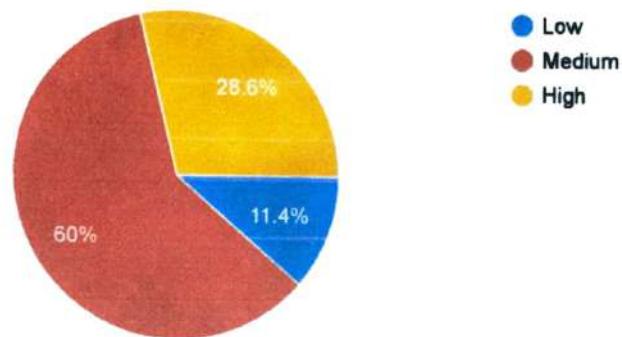
[Publish analytics](#)

How would you rate the lectures delivery level?

C01: Identify the use of appropriate statistical terms to describe data

[Copy](#)

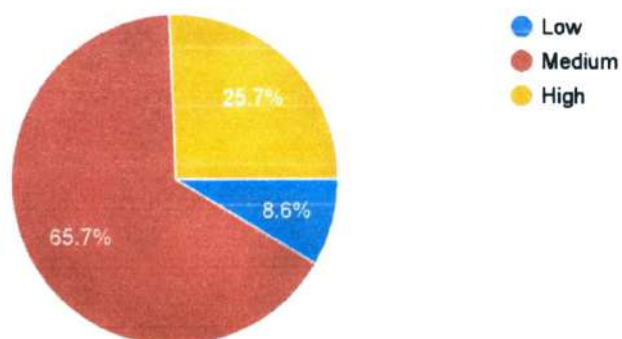
35 responses



C02: Use appropriate statistical methods to collect, organize, display, and analyze relevant data.

[Copy](#)

35 responses

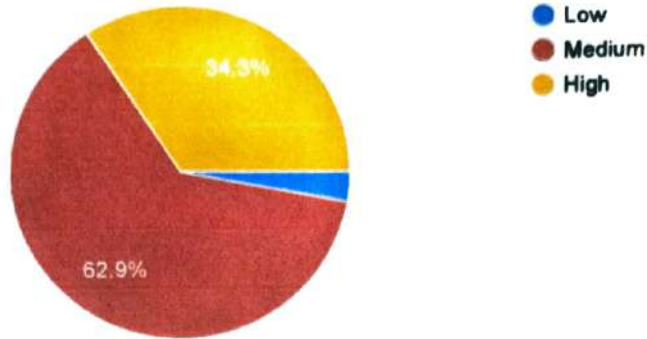


[Handwritten signature]

C03: Use distribution functions for random variables

Copy

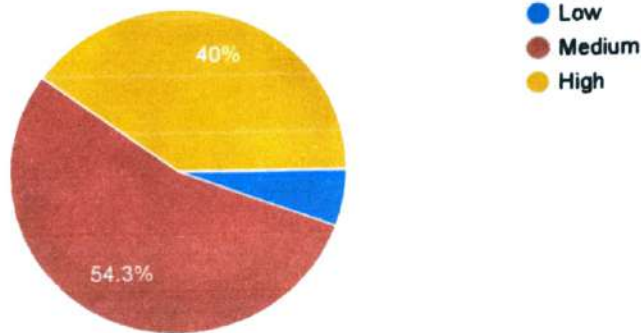
35 responses



C04: Distinguish between correlation coefficient and regression

Copy

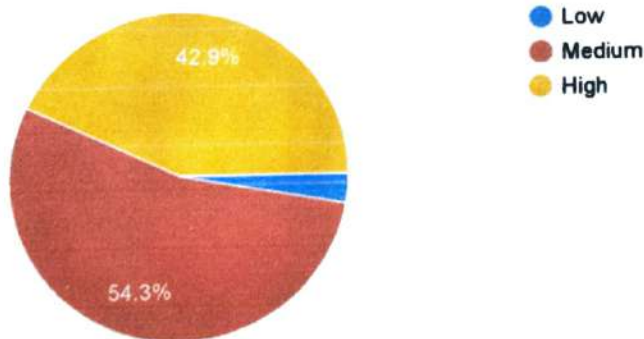
35 responses



C05: Understand tests for hypothesis and its significance

Copy

35 responses




Subject Incharge


Head, AI&DS, Department


Principal



SE Course Exit Survey SEM-II Academic Year 2021-22 Software Engineering

34 responses

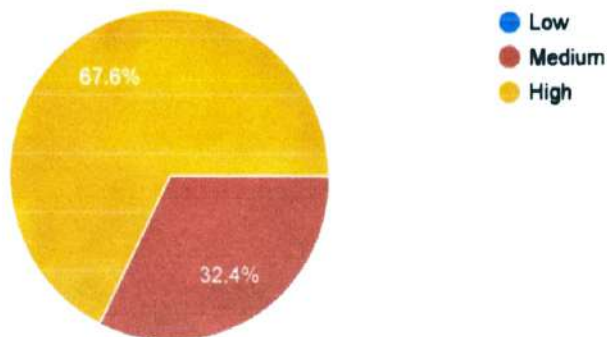
[Publish analytics](#)

How would you rate the lectures delivery level?

C01: Analyze software requirements and formulate design solution for a software.

 Copy

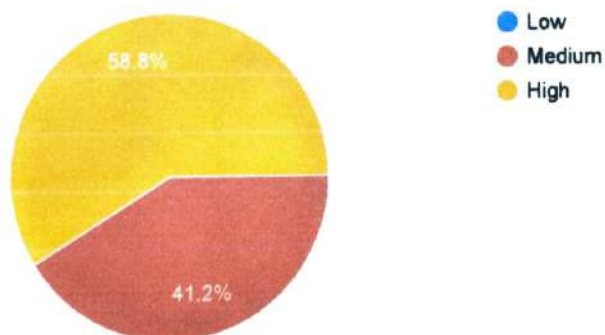
34 responses



C02: Design applicable solutions in one or more application domains using software engineering approaches that integrate ethical, social, legal and economic concerns.

 Copy

34 responses

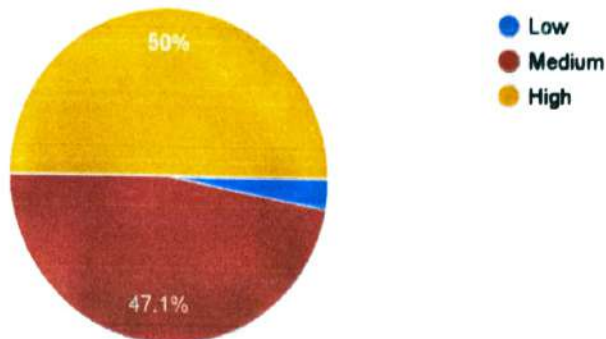




C03: Apply new software models, techniques and technologies to bring out innovative and novelistic solutions for the growth of the society in all aspects and evolving into their continuous professional development.

 Copy

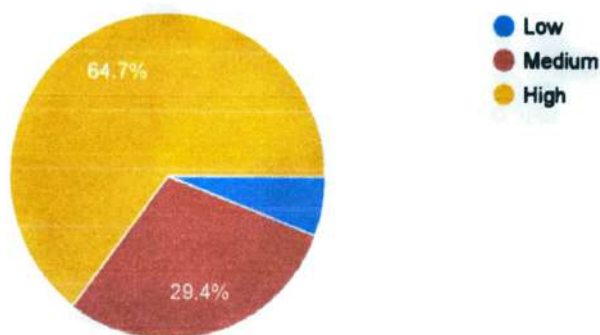
34 responses



C04: Model and design User interface and component-level.

 Copy

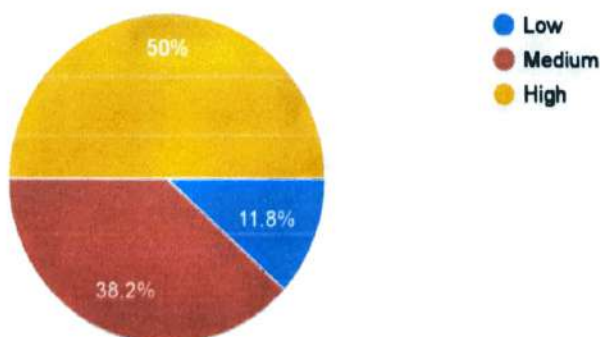
34 responses



C05: Identify and handle risk management and software configuration management.

 Copy

34 responses

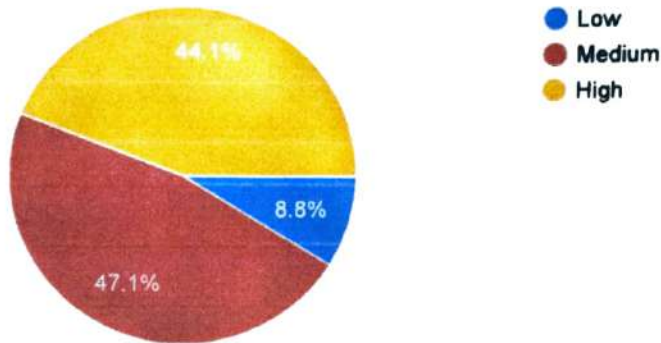




C06: Utilize knowledge of software testing approaches, approaches to verification and validation.

 Copy

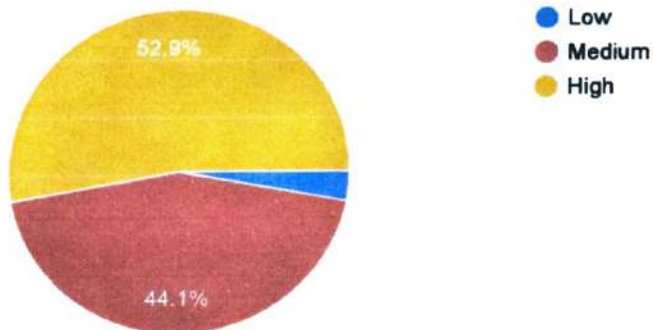
34 responses



C07: Construct software of high quality software that is reliable, and that is reasonably easy to understand, modify and maintain efficient, reliable, robust and cost-effective software solutions.

 Copy

34 responses




Subject Incharge


Head, AI&DS, Department


Prinicpal



Read the documentation and build something

This content is neither created nor endorsed by Google. [Report Abuse](#) - [Terms of Service](#) - [Privacy Policy](#)

SE Course Exit Survey SEM-II Academic Year 2021-22 Subject :Internet of Things

33 responses

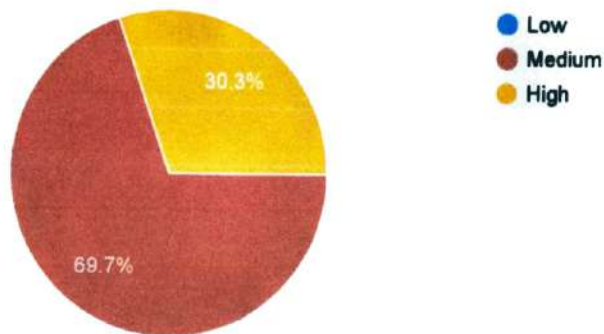
[Publish analytics](#)

How would you rate the lectures delivery level?

C01: Have a thorough understanding of the structure, function and characteristics of computer systems and Understand the structure of various number systems and its application in digital design.

 Copy

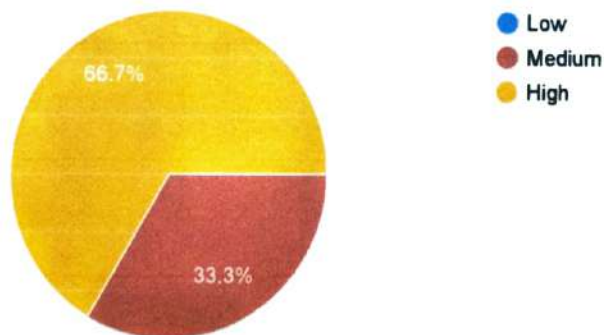
33 responses



C02: Develop the skill set to build IoT systems and sensor interfacing.

 Copy

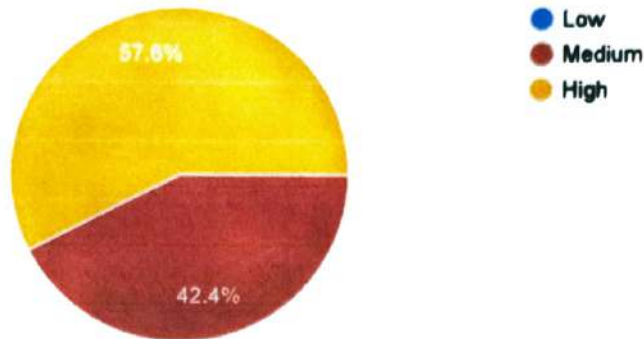
33 responses



CO3: Explain the concept of Internet of Things and identify the technologies that make up the internet of things

 Copy

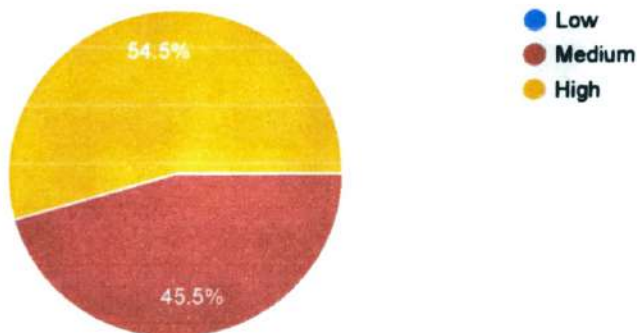
33 responses



CO4: Analyze trade-offs in interconnected wireless embedded device networks. Select Appropriate Protocols for IoT Solutions

 Copy

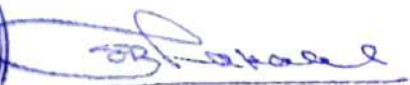
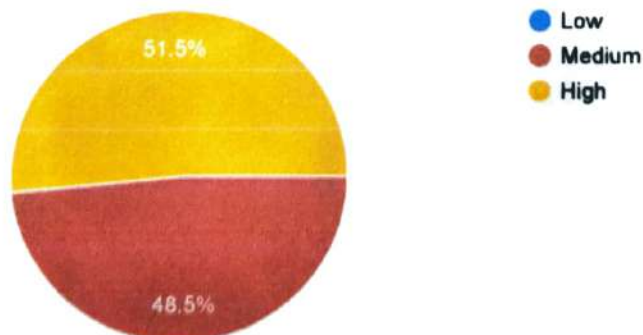
33 responses



CO6: Identify the Application of IoT in automation of Commercial and Real World examples

 Copy

33 responses



A handwritten signature in blue ink, appearing to read "Dr. Amrutesh Pawar".

Special Comments or suggestions if any

5 responses

-

Good

-

N.A.

No

This content is neither created nor endorsed by Google. [Report Abuse](#) - [Terms of Service](#) - [Privacy Policy](#)

Google Forms



Subject Incharge



Head, AI&DS, Department



Principal

